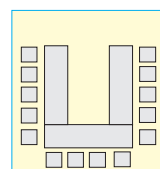
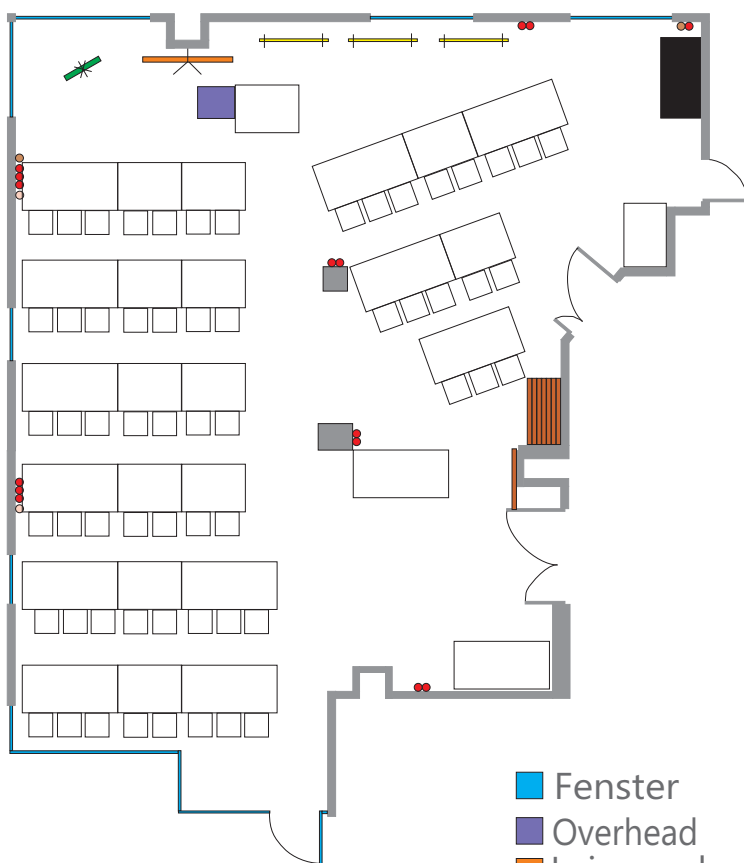


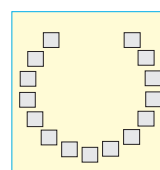
Beide Räume kombiniert 110 Personen

**168 m², Erdgeschoss, Tageslicht, W-LAN, ISDN-Anschluss
Verdunkelungsmöglichkeit**

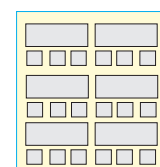
| | | |
|-----------------------|----------|----------|
| | Ganztags | Halbtags |
| Tagungen und Seminare | 350,00 € | 250,00 € |
| Ausstellungen | 550,00 € | 430,00 € |



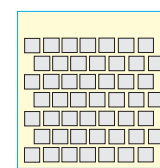
50



75



60



150

- Fenster
- Overhead
- Leinwand
- Flip-Chart
- Pinnwand
- 220 Volt
- TV Anschluss
- ISDN Anschluss